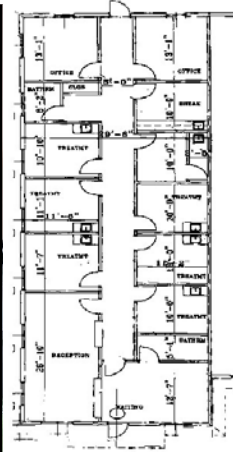
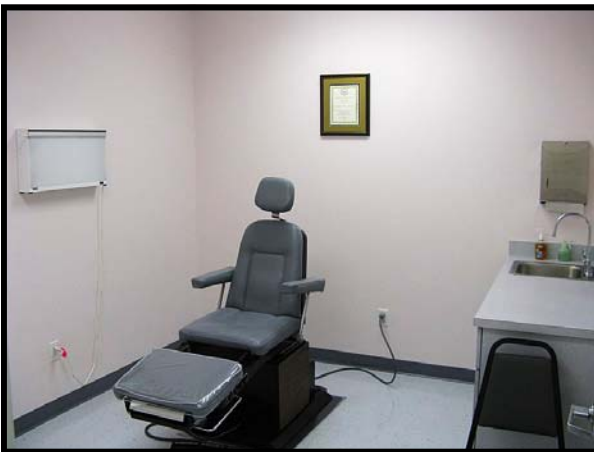


# Medical Office Condo For Sale or Lease (sublease available) FULLY EQUIPPED MEDICAL OFFICES RADIOLOGY LAB INCLUDED

2324 Square Feet



**MOVE RIGHT IN AND BEGIN PRACTICING ON DAY ONE!**

Completely finished and ready to use medical office. Six examining rooms, radiology lab/x-ray machine, large reception and front office, ample waiting room, two executive offices, break room and two restrooms — one for patients one for staff. Existing medical office operates on Tuesday and Thursday, will sublease to tenant with full access to premises and all facilities 24/7.

**GEOGRAPHICALLY PERFECT!** This location at 1310 Eau Gallie Blvd. provides visibility, accessibility and convenience from every direction.



For more information, please contact:

**JOE POIRIER**

**321.537-7996**

[joe@jmrealestate.com](mailto:joe@jmrealestate.com)

2425 PINEAPPLE AVENUE STE 108, MELBOURNE, FL 32935

*Information contained herein has been obtained from others and considered to be reliable; however, a prospective purchaser or lessee is expected to verify all information to his/her own satisfaction.*